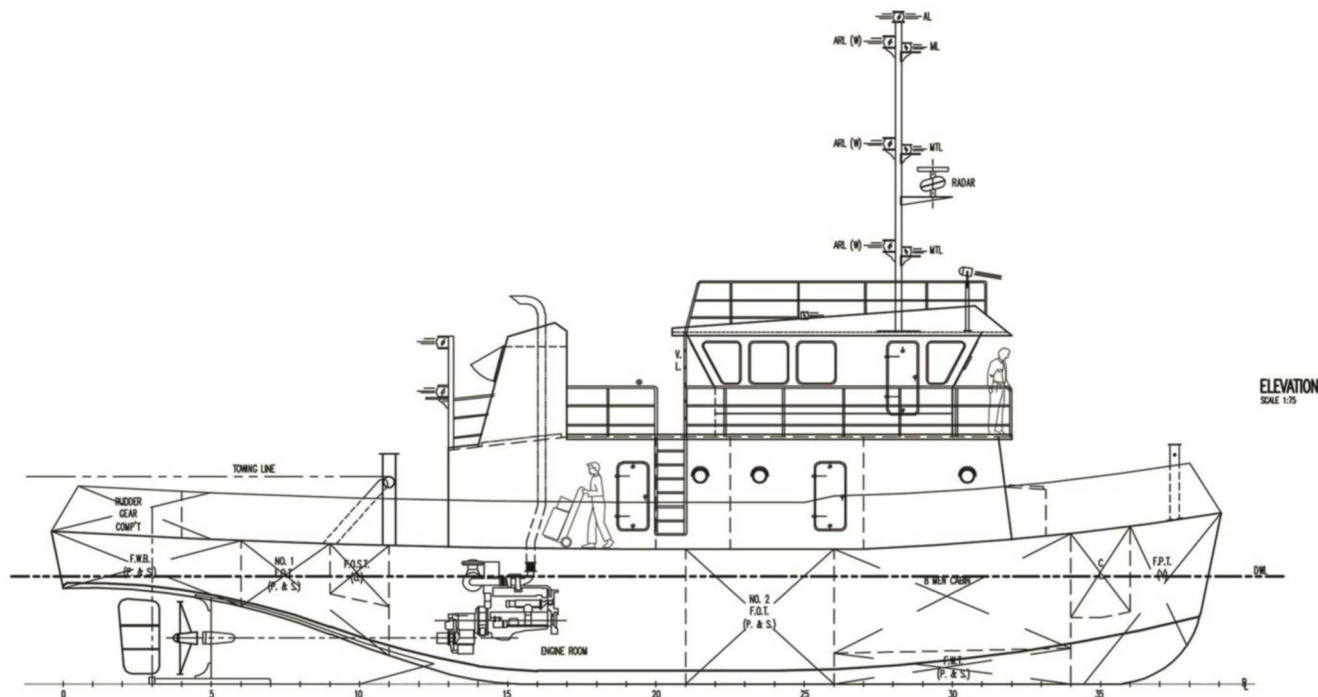


“22M TWIN SCREW TUGBOAT” 1000BHP TUGBOAT SPECIFICATION (GSY037)



GENERAL

Builder	GIMHWAK SHIPYARD SDN. BHD.
Length (OA)	22.06M
Breadth Moulded	6.400M
Depth Moulded	2.650M
Design Draft	2.150M
Classification	Kerajaan Malaysia (KM)
Speed	Free –Running: Approx. 10.0 Knots
Accommodation	10 Men
Notation	Sarawak Water Only

MACHINERIES

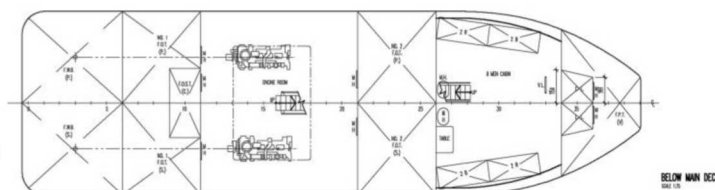
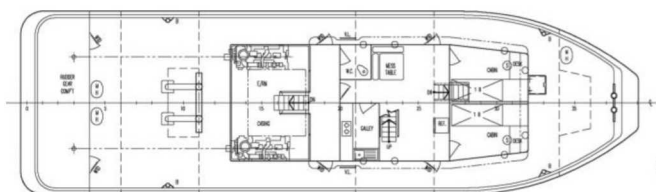
Main Engines	2 X 600BHP @ 1800 RPM, China CUMMINS Engine, Model: KTA19-M 600
Gear Box	2 X HangZhou Advance HCD 400 (Ratio 6:1)
Propeller	2 X Fixed Pitch 4-bladed Manganese Bronze
Generators	2 X 24Kw Cummins Generator
Steering Gear	Hydraulic steering Gear capacity : 1.5 Tons
Air Conditioning	Split type air conditioning

NAVIGATION & COMMUNICATION

Magnetic Compass	DAIKO T-150 - Magnetic Compass
GPS	FURUNO GP32 or Equal
Marine Radar	FURUNO 1715 Radar or Equal
VHF Radiotelephone	STANDARD HORIZON GX-1000S or Equal
Intercom System	Three station intercom telephone

CAPACITIES

Fuel Oil Capacity	68.60 Ton (Approx)
Fresh Water Ballast	22.60Ton (Approx)
GRT	96 Ton (Approx)
NRT	29 Ton (Approx)



Certificate No: KLR 6046305

GIMHWAK GROUP

Lot 205 & 303, Sg. Maaw Road, Sg. Bidut,
96000 Sibul, Sarawak, Malaysia.
Tel: +6 084-229308, 229318 Fax: +6 084-311163

SHIPBUILDING, SHIPPING, SHIP REPAIRS,
GENSET, MARINE ENGINE, BLASTING

